

SOUTH AFRICAN PONY CLUB



Points of the horse Achievement Badge

Workbook



Objectives:

To know the points of the horse, colours and markings

Key points:

- Basic points of the horse eg ear, nose, poll, fetlock, stifle, hock, hoof, frog etc
- Clear identification of colours: chestnut, dun, grey, palomino, bay, brown, black, pie and skewbald
- Clear identification of markings on the face and legs: snip, blaze, star, sock etc

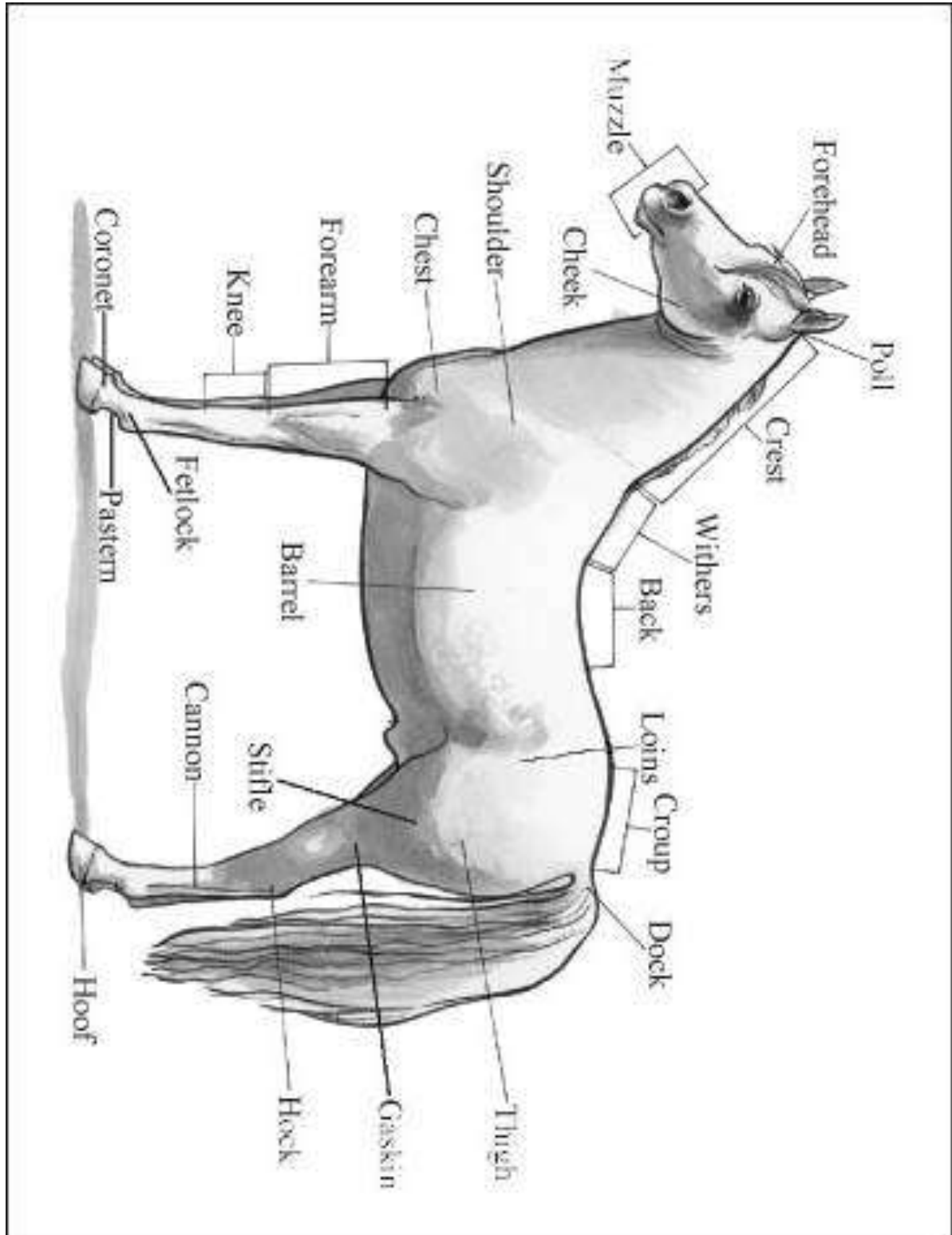
Additional reading:

New Zealand Pony Club Manual No 1
The Manual of Horsemanship

NAME _____

BRANCH _____

Lesson 1: Parts of the Pony



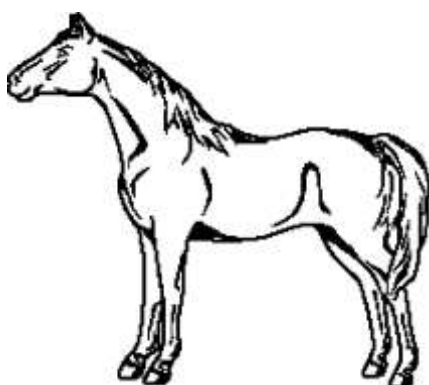


Lesson 2: Colours & Markings

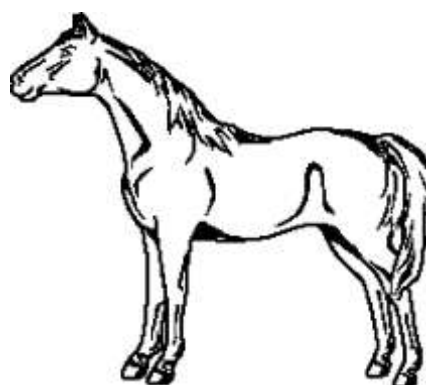
Horses and ponies come in many different colours. The colour is assessed by considering the colour of the coat and the colour of the 'points'. The points are the muzzle, the tips of the ears, the mane, the tail, and the markings on the legs.

- BAY** A light brown or reddish brown horse with a black mane and tail and black legs below the knee and hock.
- CHESTNUT** A reddish brown horse whose legs are the same colour as his body. His mane and tail are either the same colour or a little lighter.
- GREY** A grey horse has a mixture of black and white hairs. Grays can be light or dark or nearly white. The mane and tail are grey.
- BLACK** The body, mane and tail are black.
- BROWN** The body is dark brown with the same coloured mane and tail.
- DUN** The body is a creamy golden colour. The mane and tail are black and there is a black line running down the back.
- PALOMINO** The body is a golden colour. The mane and tail are white.
- PIEBALD** Piebalds have black and white patches. The mane and tail can be black or white or both.
- ROAN** The body has a base colour with white hairs 'ticked' through it. There are different names for roans depending on the base colour, eg strawberry roan has a base colour of chestnut, and a blue roan has a base colour of grey.
- SKEWBALD** A skewbald has patches made up of white and another colour (brown, dun, bay, grey) – anything except black. The mane and tail can be any colour.

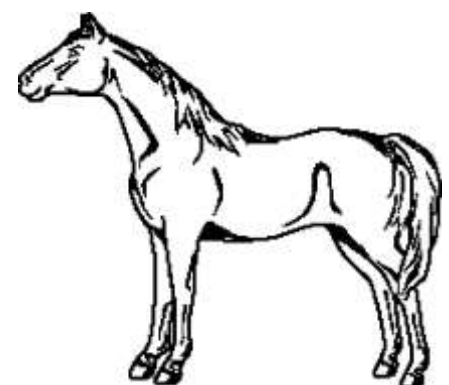
Colour in the horses below



Skewbald

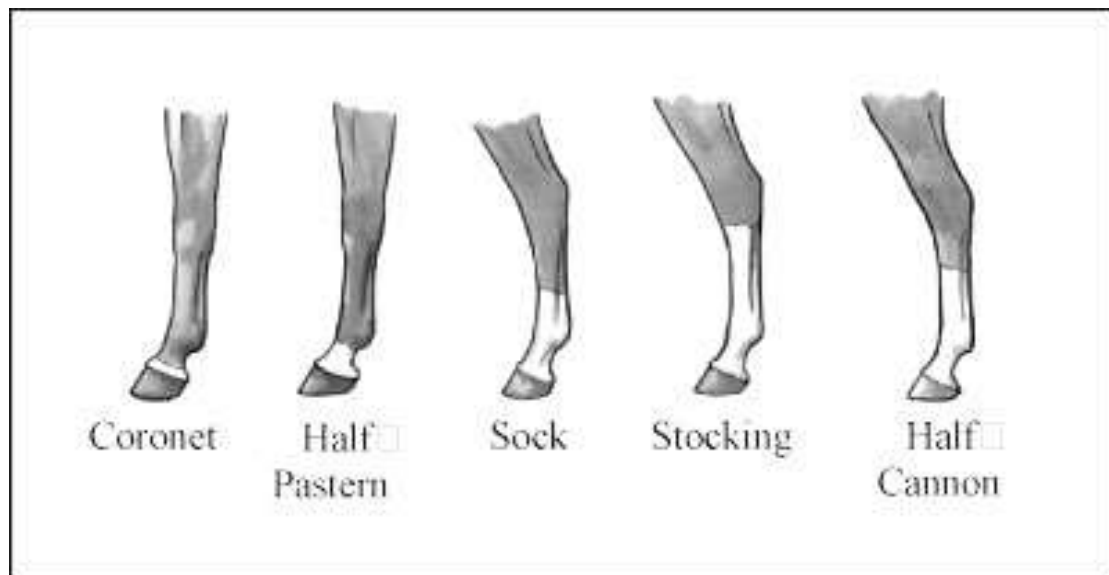


Bay

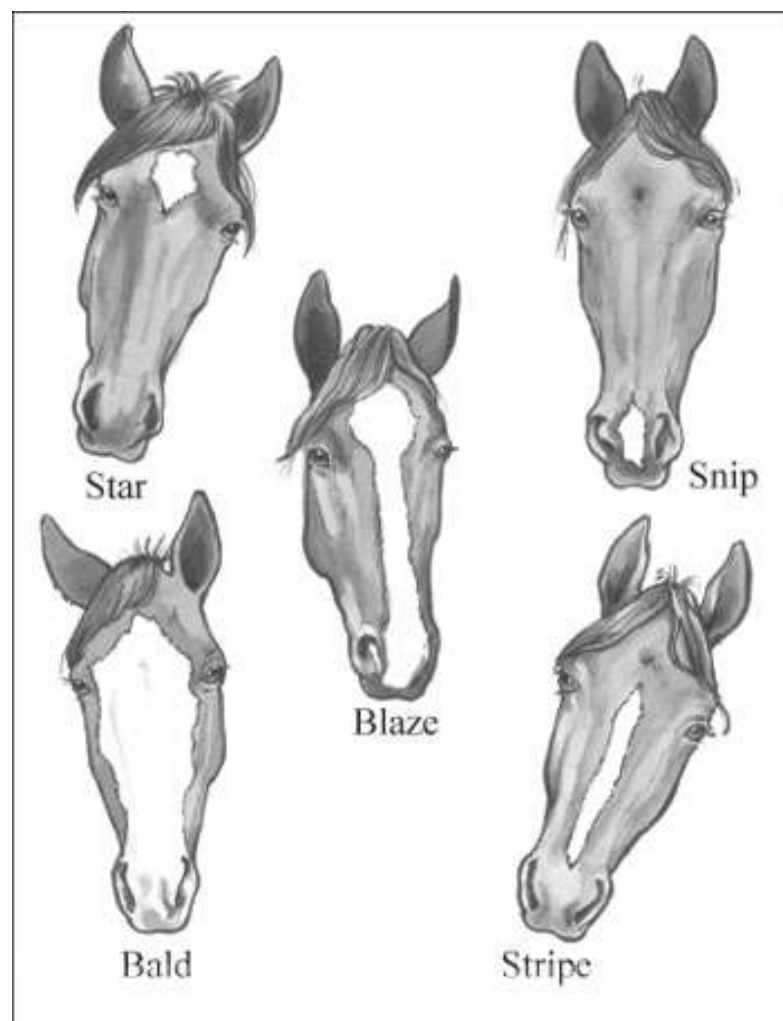


Dun

Leg Markings



Face markings





Test yourself

Draw the face markings on the faces below. Try not to look unless you really can't remember!



Snip



Star



Stripe



Blaze

Draw the face and leg markings of your horse/pony below, and colour it in. Write the correct colour of your pony below the drawing

